

POSITIONING OF IMPRINTER

For proper position of imprint on label, left to right adjustment is accomplished by loosening bolts in mounting bar on applicator and sliding for position. Re-tighten bolts.

Vertical adjustment is accomplished by loosening the two bolts and sliding imprinter up or down to proper position.

IMPRINTER INSTRUCTIONS

Web the imprinter as per the diagram furnished. Be sure that the dull side (pigment) of the tape faces away from type chase and toward the label.

SET-UP

Plug the imprinter into proper receptacle on the applicator or dispenser and turn the main switch on. This allows the machine to heat up to operating temperature (7 to 10 minutes). Lock the type in the type chase so that it approximately centers and place the chase in the heat block. By using spacers, the type will print in either direction on the label. The width of the transfer tape should, of course, be wider than the print width.

OPERATING

The label web should be threaded between the transfer tape and the anvil. When activated, the anvil presses the label against the tape and the hot type melts the pigment on the tape which then transfers to the label surface. Four set screws are located on the back of the anvil and should be used to adjust the level of the anvil in relation to the type to assure even pressure across the type for good printing. The amount of tape pulled through the machine with each stroke is governed by a threaded rod located in the end of the air cylinder. Loosen the lock nut and turn the rod in or out to adjust the amount of tape pulled.

The pressure required to print each form may vary with the surface area being printed. Adjust the pressure so that good printing is obtained with the least amount of pressure. Too much air pressure causes undue wear of the type or plate and also shortens the life of the anvil pad.

IMPRINTER ADJUSTMENT

Best results in hot stamp imprinting depends on correct temperature, pressure, dwell time and stroke speed. Different stocks may require adjusting any of these, as follows:

HEAT:

Attached to the side of the heated block is a thermostat. The temperature may be adjusted by removing heat block cover and turning the adjusting screw clockwise to increase heat.

CAUTION: DO NOT TURN OVER 1/8TH OF A TURN AT ONE TIME AS THIS INCREASES THE HEAT BY ABOUT 50°.

PRESSURE:

Normal printing pressures vary with the printing area. Pressure should be kept just high enough to obtain good results. Too much air pressure causes excessive wear on type and platen pad.

DWELL:

Dwell time is adjusted by the potentiometer located on the power module in the applier. Remove the small cover for access. Turning the potentiometer clockwise increases dwell time.

STROKE SPEED:

Should the speed of the printing stroke require adjusting, the two small screws located in the plug in the exhaust part of the solenoid air valve can be turned to close off the flow of air. Too fast a stroke can cause slippage of the waste rewind and can also cause a double image.

WEBBING:

Time can be saved in webbing the imprinter by attaching the lead end of the new roll to the old roll and pulling the splice through by turning the drive roll by hand.

TAPE ADVANCE:

The amount of tape pulled through by each printing stroke is controlled by the machine screw located in the end of the air cylinder. Turning the screw in (to the right) shortens the amount and vice versa. The tape should advance just enough to present a new surface on each impression.

Accessories

For

Steel Type

*Norwood Type Chase and Handle;
Part # 700100

Norwood Spacer Sets;

Vertical: set of (7) 1-1/2" Long
Includes 4ea. 0.125" THK and 3ea. 0.250" THK

Horizontal: set of (8) 1-1/4" Long
Includes 4ea. 0.125" THK and 4ea. 0.250" THK

Blank Single Character Spacers

*Note: Does not include Spacers.

Spacer Assortments; 6-14 pt.
18-36 pt.

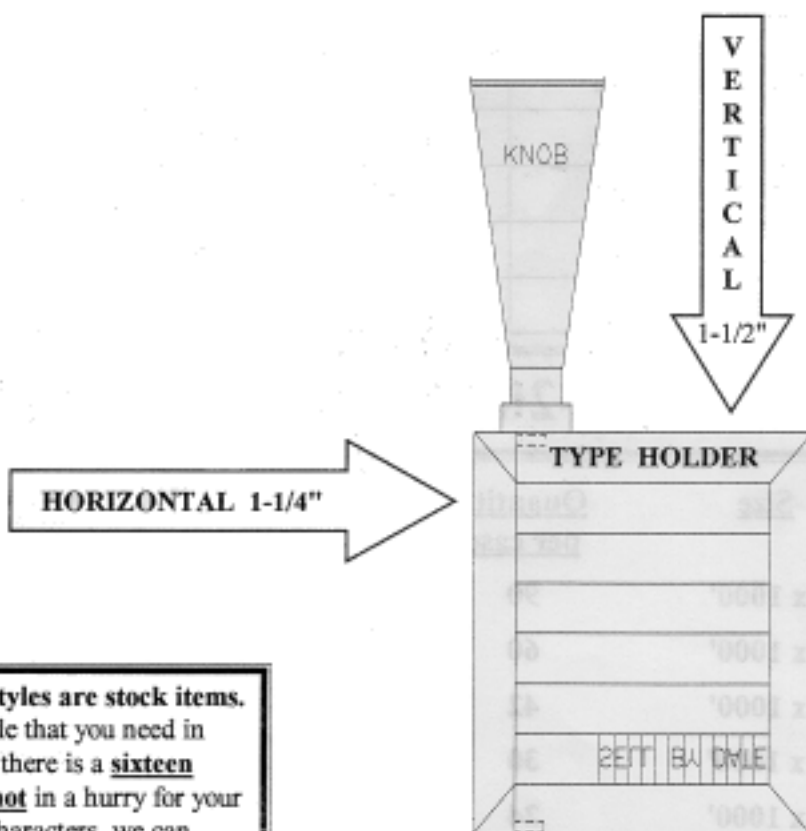
Symbols; (Category-1) [] " , ! : ; / + = -
(Prices according to point size PLUS 25%.)
(Category-2) # \$ % * .
(Prices according to point size PLUS 50%.)

3 Character Block; (All point sizes.)

3 or More Character Block;
(according to point size.)
for each additional character (GREATER THAN 3)

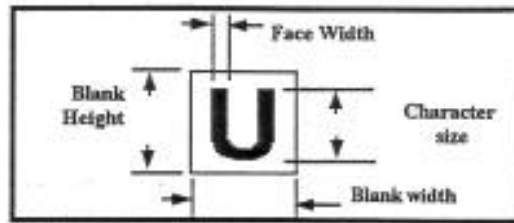
Norwood Type Chase

Determining The Proper Size Spacers (Vertical and Horizontal)



NOTE; Not all type sizes and styles are stock items. If we do not have the size and style that you need in stock and you need it right away, there is a sixteen character minimum. If you are not in a hurry for your order, or you don't need sixteen characters, we can possibly tag your order on to an existing order.

Character Size Diagram



C205 HOT STAMP IMPRINTER TYPE (NORWOOD STYLE)

PART NUM.	Durable	Norwood	POINT SIZE	CHAR SIZE	FACE WIDTH	TOP TO BOTTOM	BLANK WIDTH	PRICE / CHAR
600451	DEV2	39VA2	6	1/16"	.006"	1/8"	.078"	
600452	DE9V	39V	6	1/16"	.006"	1/8"	.062"	
600453	DE6M	26M	6	1/16"	.006"	1/4"	.078"	
600450	DEV1	39VA1	8	3/32"	.008"	1/8"	.078"	
600454	DE5X	25EX	8	3/32"	.008"	1/4"	.078"	
600455	DE5D	25TD	10	1/8"	.010"	1/4"	.100"	
600456	DE5G	25TG	14	3/16"	.010"	1/4"	.125"	
600457	DE5N	25TN	14	3/16"	.025"	1/4"	.125"	
600458	DE5A	25TA	18	1/4"	.030"	5/16"	.187"	
600459	DEJ1	32J1	36	3/8"	.040"	1/2"	.175"	
600460	DEJ2	32J2	36	3/8"	.040"	1/2"	.325"	
600461	DE1V	31VN	42	7/16"	.050"	1/2"	.312"	
600462	DET1	32T2	42	7/16"	.050"	1/2"	.281"	
600463	DEE1	34E1	42	7/16"	.020"	1/2"	.187"	
DEE2			42	7/16"	.020"	1/2"	.375"	
DE2A			72	3/4"	.090"	7/8"	.375"	
DE2V			N/A	7/8"	.100"	1"	.500"	

BLANKS, SYMBOLS AND LOGO BLOCKS –

BLANKS CHARACTER SPACERS (PLEASE ADD A “B” TO THE END OF THE PART NUMBER YOU ARE ORDERING) **\$ 5.00 EA**

SYMBOLS – THE FOLLOWING SYMBOLS ARE PRICED ACCORDING TO THEIR SINGLE CHARACTER SIZE PRICE **PLUS 25%**

BRACKETS [] QUOTATION “ ” COMMA , EXCLAMATION !
 COLON : SEMI-COLON ; BACKSLASH \ FRONT SLASH /
 PLUS + EQUALS = DASH –

BLANKS, SYMBOLS AND LOGO BLOCKS –CONT.

SYMBOLS – THE FOLLOWING SYMBOLS ARE PRICED ACCORDING TO THEIR SINGLE CHARACTER SIZE PRICE **PLUS 50%**

POUND # DOLLAR \$ PERCENT % ASTERISK * ` PERIOD .

LOGO BLOCKS –

3 CHARACTER LOGO BLOCKS = \$ 30.00

MORE THAN 3 CHARACTERS ARE \$ 30.00 FOR FIRST THREE PLUS THE SINGLE CHARACTER PRICE FOR EACH ADDITIONAL CHARACTER ACCORDING TO THE POINT SIZE.

NOTE: Not all type sizes and styles are stock items. If we do not have the size or style that you need in stock and you need it right away, there is a **sixteen-character minimum** order requirement. However, if you are not in a hurry for your order, or you don’t need sixteen characters, we can possibly tag your order onto an existing order.

C205 HOT STAMP IMPRINT TAPE – BLACK ONLY

PART #	SIZE	QUANTITY. PER CASE	PRICE PER ROLL
600400	½” X 1000’	90	
600404	¾” X 1000’	60	
600408	1” X 1000’	42	
600412	1 ½” X 1000’	30	
600416	1 ¾” X 1000’	24	
600420	2” X 1000’	18	

**Color imprint tape – Special Ordered – By the case only – Please call for pricing*

NOTES:

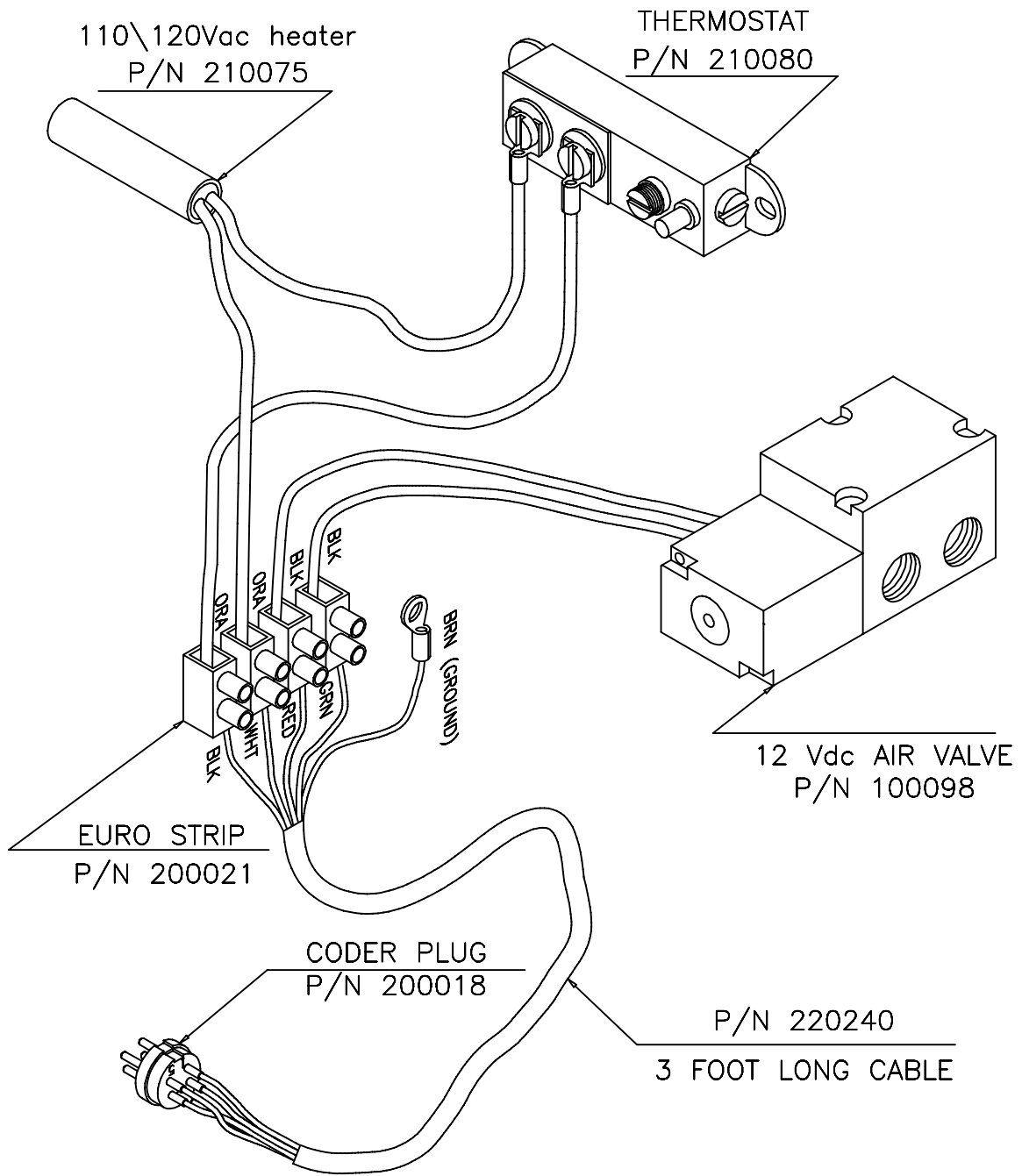
* Quantities less than one case **cannot** be drop shipped from our vendor.

* We have a **limited supply** on hand in our stockroom. If you need to order **less than one case**, we **cannot guarantee** that we will be able to fill an urgent order from our stock.

* Imprint tape is **not returnable** for credit unless there was a mistake on Universal’s part regarding your order.

**C205 HOT STAMP IMPRINTER
RECOMMENDED SPARE PARTS LIST**

PART #	PART DESCRIPTION
210075	HEATER
210080	THERMOSTAT
IN-603-3	PAD, PLATEN
IN-608	ROLLER, PRESSURE
IN-609	ROLLER, DRIVE
IN-624-3	SHAFT, DRIVE GEAR
IN-624-4	SHAFT, DRIVE ROLLER
IN-625	GEAR, 32 TOOTH BRASS W/400000 BEARING
IN-658	BELT, 1/8" DIA. X 3 7/8"L. (ORANGE)
IN-659	BELT, 1/8" DIA. X 8 1/2"L. (ORANGE)



CODER PLUG

1. BLACK 110Vac (HOT)
2. BROWN CHASSIS GROUND
3. RED +12Vdc (PULSE)
4. GREEN -Vdc (GROUND)
5. WHITE 110Vac (NEUTRAL)

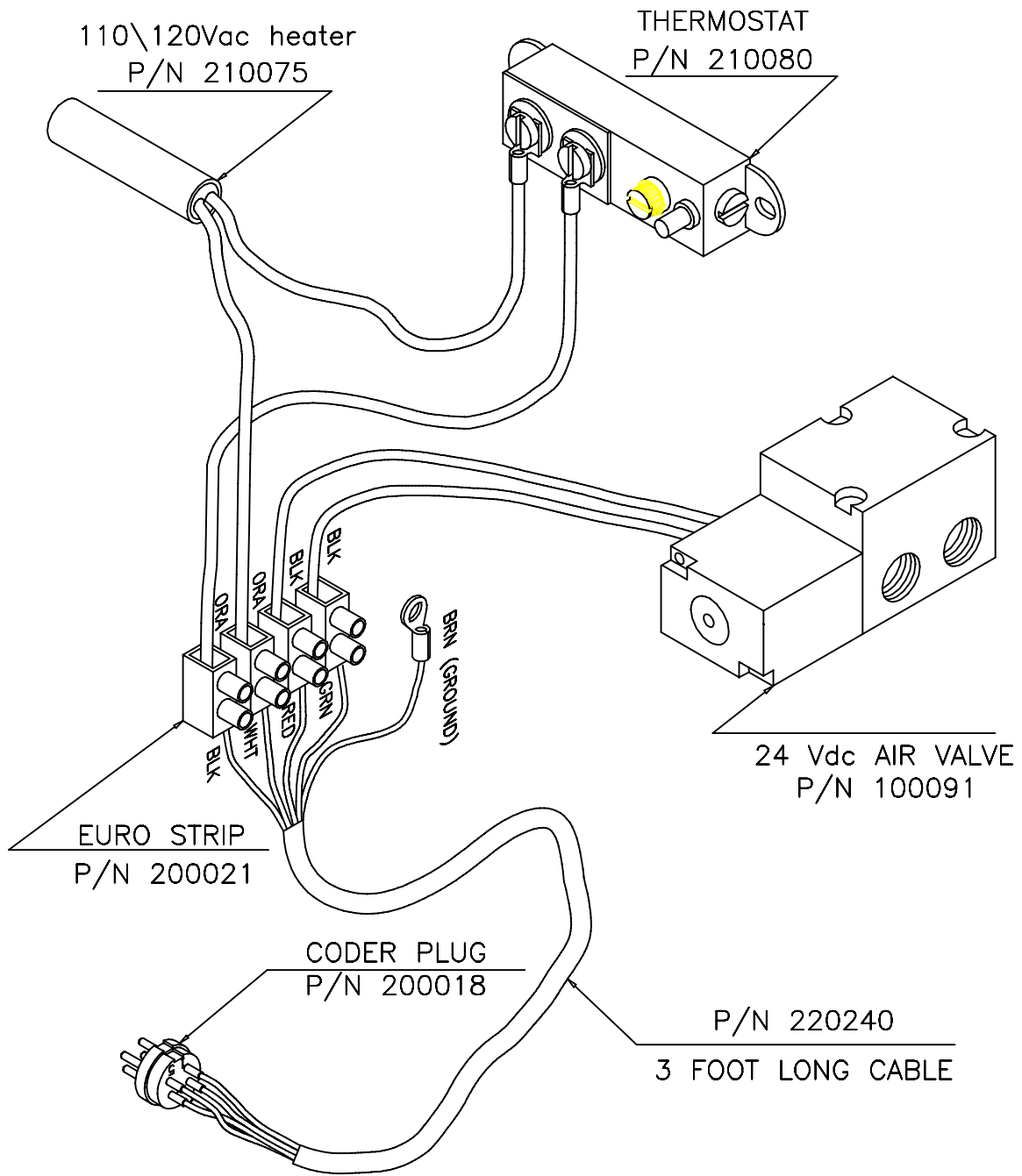
DESCRIPTION					ELECTRICAL SCHEMATIC				
PRODUCT					(C-205) HOT STAMP IMPRINTER				
DATE	DRAWN BY	REV. LEV.	REV. BY	CAD FILE:					
6-08-1994	G. T. H.	X	X	205-E-00					



LABELING SYSTEMS INC.

3501 8TH AVENUE SOUTH
ST. PETERSBURG, FLORIDA 33711
TEL. (727) 327-2123

PRINT NUMBER
205-E-00



- CODER PLUG**
1. BLACK 110Vac (HOT)
 2. BROWN CHASSIS GROUND
 3. RED +24Vdc
 4. GREEN -Vdc (SIGNAL FROM PLC-Y0)
 5. WHITE 110Vac (NEUTRAL)

DESCRIPTION	ELECTRICAL SCHEMATIC			
PRODUCT	(C-205) HOT STAMP IMPRINTER (WITH 24V VALVE)			
DATE	DRAWN BY	REV. LEV.	REV. BY	CAD FILE:
11-12-1998	JBR	X	X	205-E-01

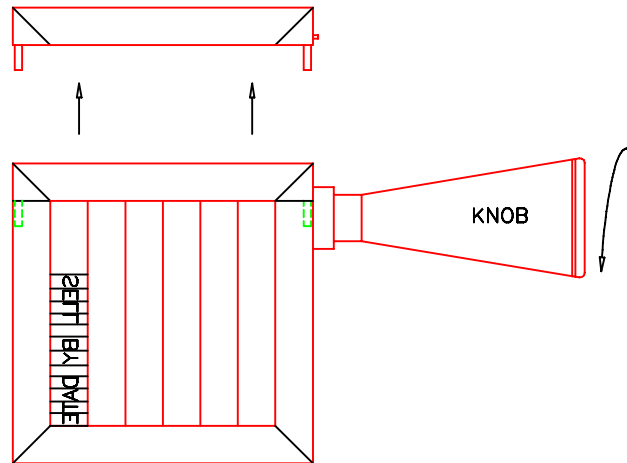


LABELING SYSTEMS INC.

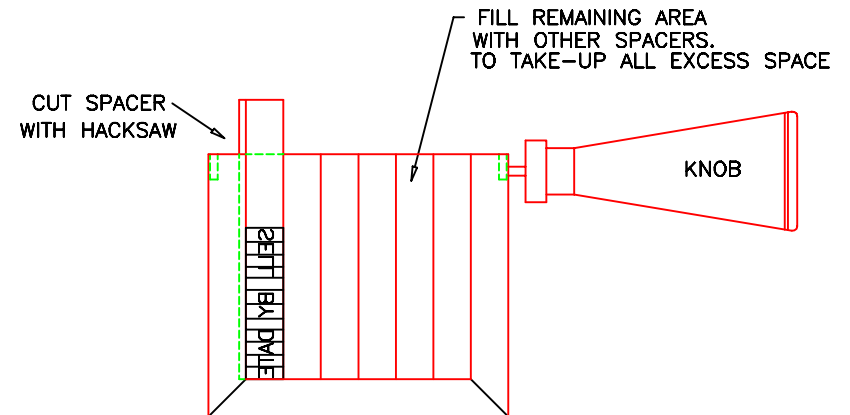
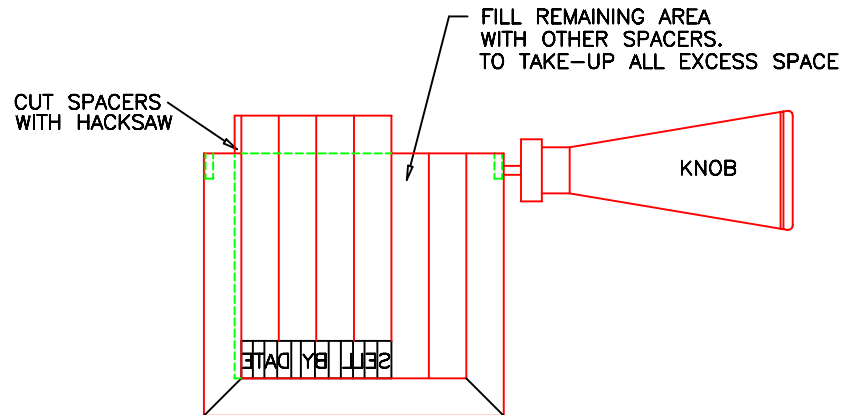
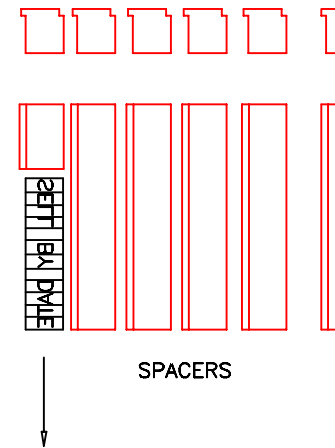
3501 8TH AVENUE SOUTH
ST. PETERSBURG, FLORIDA 33711
TEL. (727) 327-2123

PRINT NUMBER
205-E-01

1. REMOVE END PLATE BY LOOSENING KNOB.
REMOVE SPACERS.

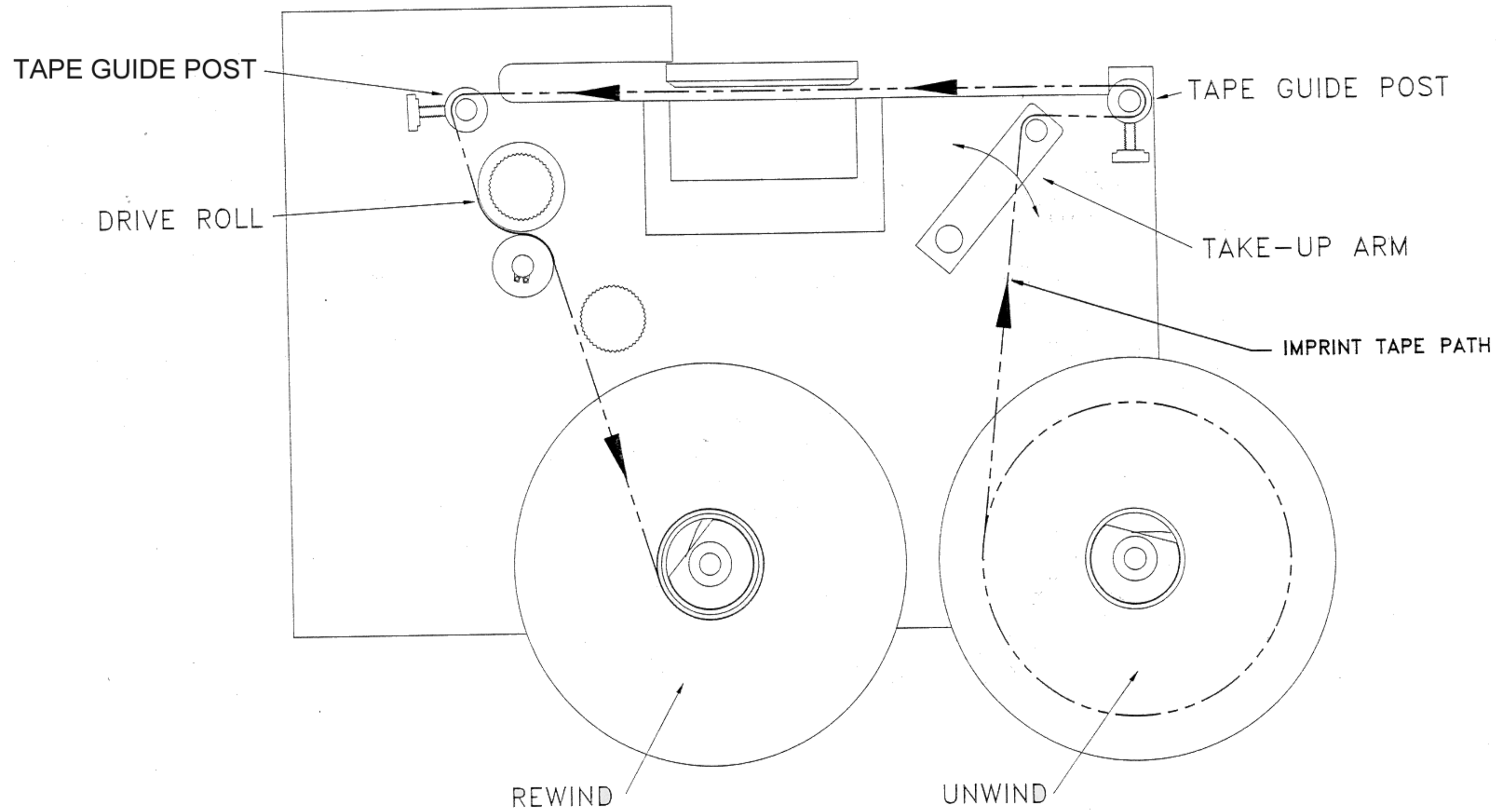


2. PLACE TYPE IN TYPE CHASE TO READ AS DESIRED.
SPACERS MAY HAVE TO BE CUT WITH HACKSAW
TO ACHIEVE THIS.

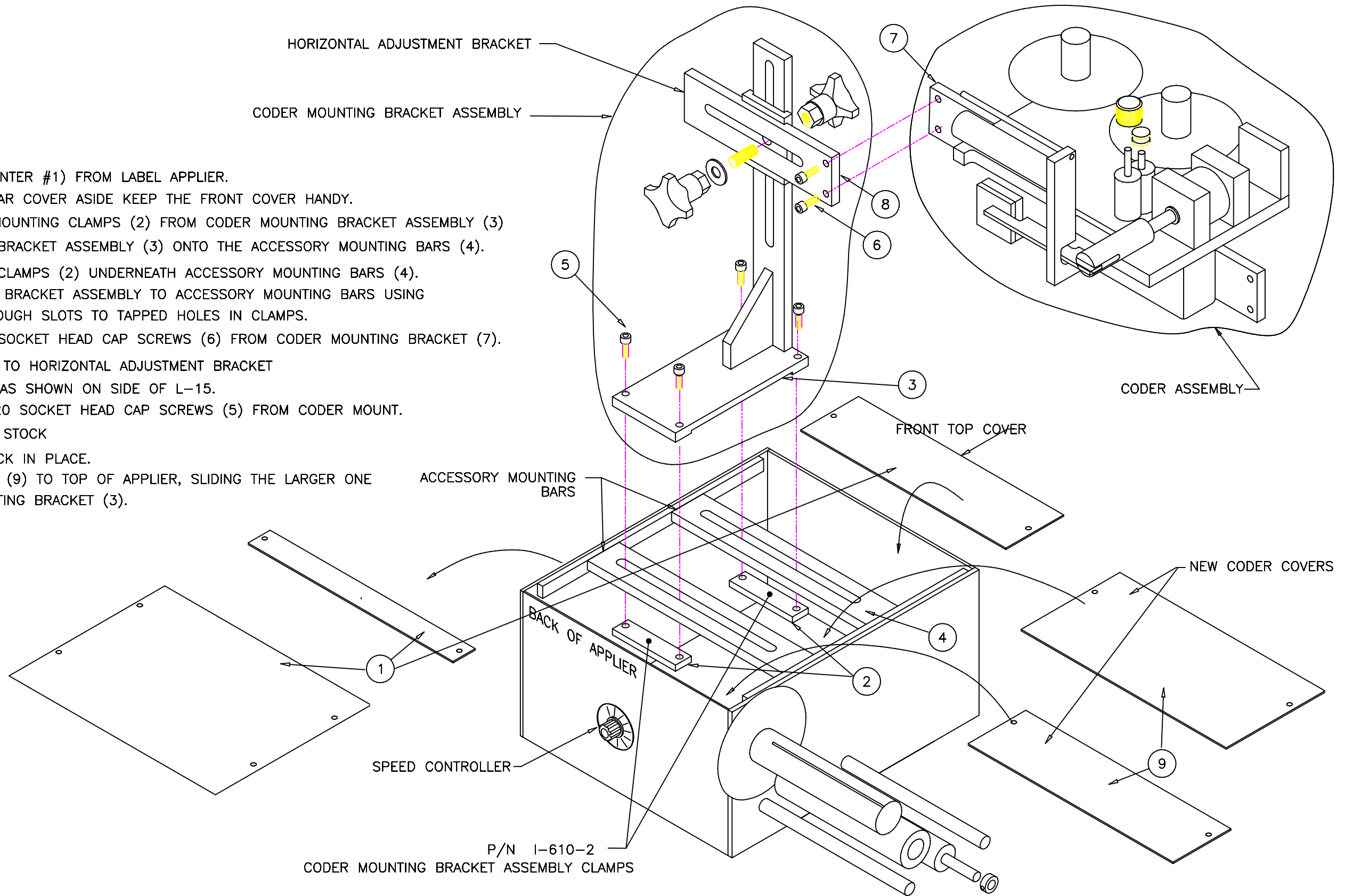


DESCRIPTION	TYPE CHASE ASSEMBLY			
PRODUCT	C-205 (HOT STAMP IMPRINTER)			
SCALE	N.T.S.	DRAWN BY	QTY. REQ'D.	CAD FILE:
DATE	5/25/1993	J.R.L.	1	7 0 0 1 0 0

WEBBING DIAGRAM



1. REMOVE ALL COVERS (POINTER #1) FROM LABEL APPLIER.
PUT THE CENTER AND REAR COVER ASIDE KEEP THE FRONT COVER HANDY.
2. UNFASTEN BOTH CODER MOUNTING CLAMPS (2) FROM CODER MOUNTING BRACKET ASSEMBLY (3)
3. PLACE CODER MOUNTING BRACKET ASSEMBLY (3) ONTO THE ACCESSORY MOUNTING BARS (4).
4. PLACE CODER MOUNTING CLAMPS (2) UNDERNEATH ACCESSORY MOUNTING BARS (4).
5. FASTEN CODER MOUNTING BRACKET ASSEMBLY TO ACCESSORY MOUNTING BARS USING 1/4-20 (5) SCREWS THROUGH SLOTS TO TAPPED HOLES IN CLAMPS.
6. UNSCREW BOTH 1/4-20 SOCKET HEAD CAP SCREWS (6) FROM CODER MOUNTING BRACKET (7).
7. ATTACH CODER ASSEMBLY TO HORIZONTAL ADJUSTMENT BRACKET
8. WEB LABELS THRU L-15 AS SHOWN ON SIDE OF L-15.
9. LOOSEN ALL FOUR 1/4-20 SOCKET HEAD CAP SCREWS (5) FROM CODER MOUNT.
10. ALIGN CODER WITH LABEL STOCK
11. FASTEN FRONT COVER BACK IN PLACE.
12. FASTEN RETROFIT COVERS (9) TO TOP OF APPLIER, SLIDING THE LARGER ONE UNDER THE CODER MOUNTING BRACKET (3).



CODER COVERS
 IN-660 - ALUMINUM COVERS
 IN-660-1 - STAINLESS STEEL COVERS

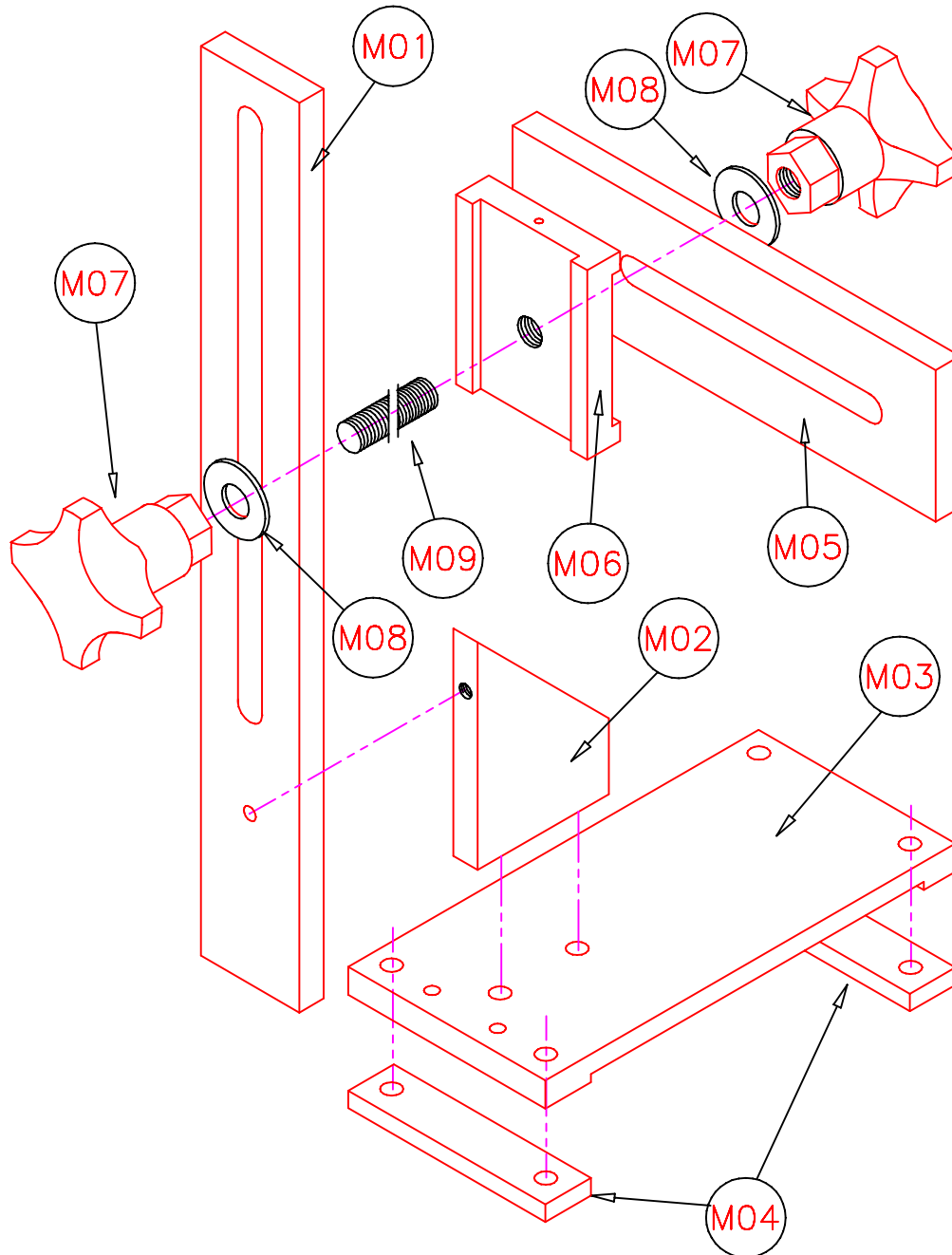
DESCRIPTION	CODER MOUNTING INSTRUCTIONS				
PRODUCT	C-205 (HOT STAMP IMPRINTER)				
SCALE	N.T.S.	DRAWN BY	REV. LEV.	REV. BY	CAD NO
DATE	7/14/1994	X	X	X	CDR-ISO1
Universal LABELING SYSTEMS INC.		3501 8TH AVENUE SOUTH ST. PETERSBURG, FLORIDA 33711 TEL. (727) 327-2123			

PART NUMBER
CDR-ISO1

BILL OF MATERIAL

ITEM	PART#	QTY	DESCRIPTION
M01	C-205-653	1	BAR, ADJUSTABLE HEIGHT
M02	SS-115	1	GUSSET, SUPPORT
M03	IN-665	1	PLATE, CODER MOUNT
M04	IN-666	2	BAR, CLAMP
M05	C-205-652	1	BLOCK, CROSS ADJUSTMENT
M06	C-205-651	1	BRACKET, ADJUSTMENT
M07	500141	2	KNOB, 3/8" THREAD
M08	NONE	2	WASHER, FLAT 3/8" ID
M09	C-205-650	1	ROD, CODER ADJUST LOCKDOWN

REV. A



DESCRIPTION CODER MOUNT-STANDARD (L-15, L-60)
 PRODUCT C-205 (HOT STAMP IMPRINTER)

DATE 11/18/1997	DRAWN BY JBR	REV. LEV. A	REV. BY JBR	CAD FILE: CM1-I-00
--------------------	-----------------	----------------	----------------	-----------------------



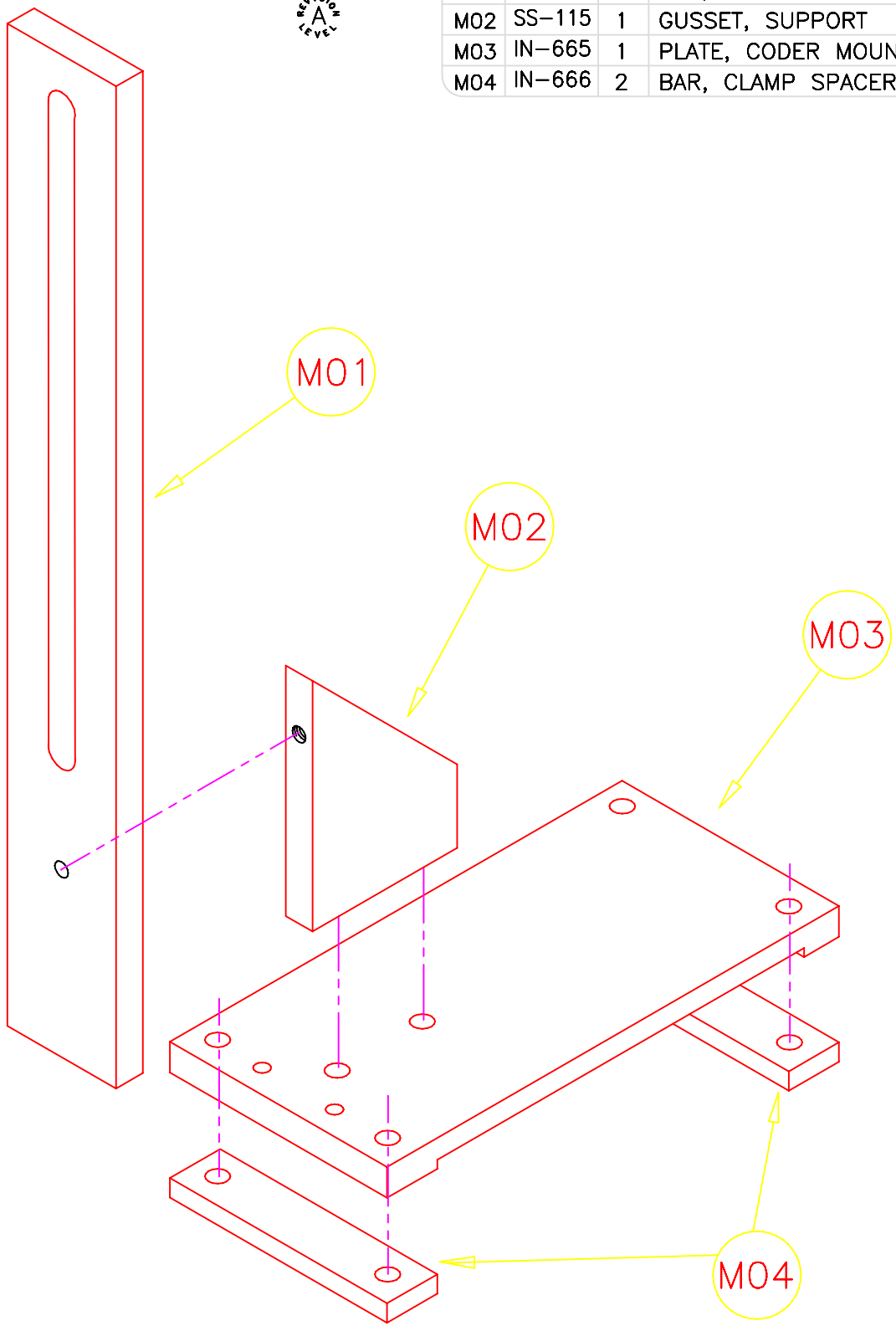
3501 8TH AVENUE SOUTH
 ST. PETERSBURG, FLORIDA 33711
 TEL. (727) 327-2123

PART NUMBER
 CM1-I-00

BILL OF MATERIAL

ITEM	PART#	QTY	DESCRIPTION
M01	IN-667	1	BAR, ADJUSTABLE HEIGHT
M02	SS-115	1	GUSSET, SUPPORT
M03	IN-665	1	PLATE, CODER MOUNT
M04	IN-666	2	BAR, CLAMP SPACER

REVISION
A



DESCRIPTION					CODER MOUNT, R-310				
PRODUCT					C-205 CODER				
DATE	DRAWN BY	REV. LEV.	REV. BY	CAD FILE:					
12/23/92	DP	A	JBR	CM2-I-00					

PART NUMBER
CM2-1-00

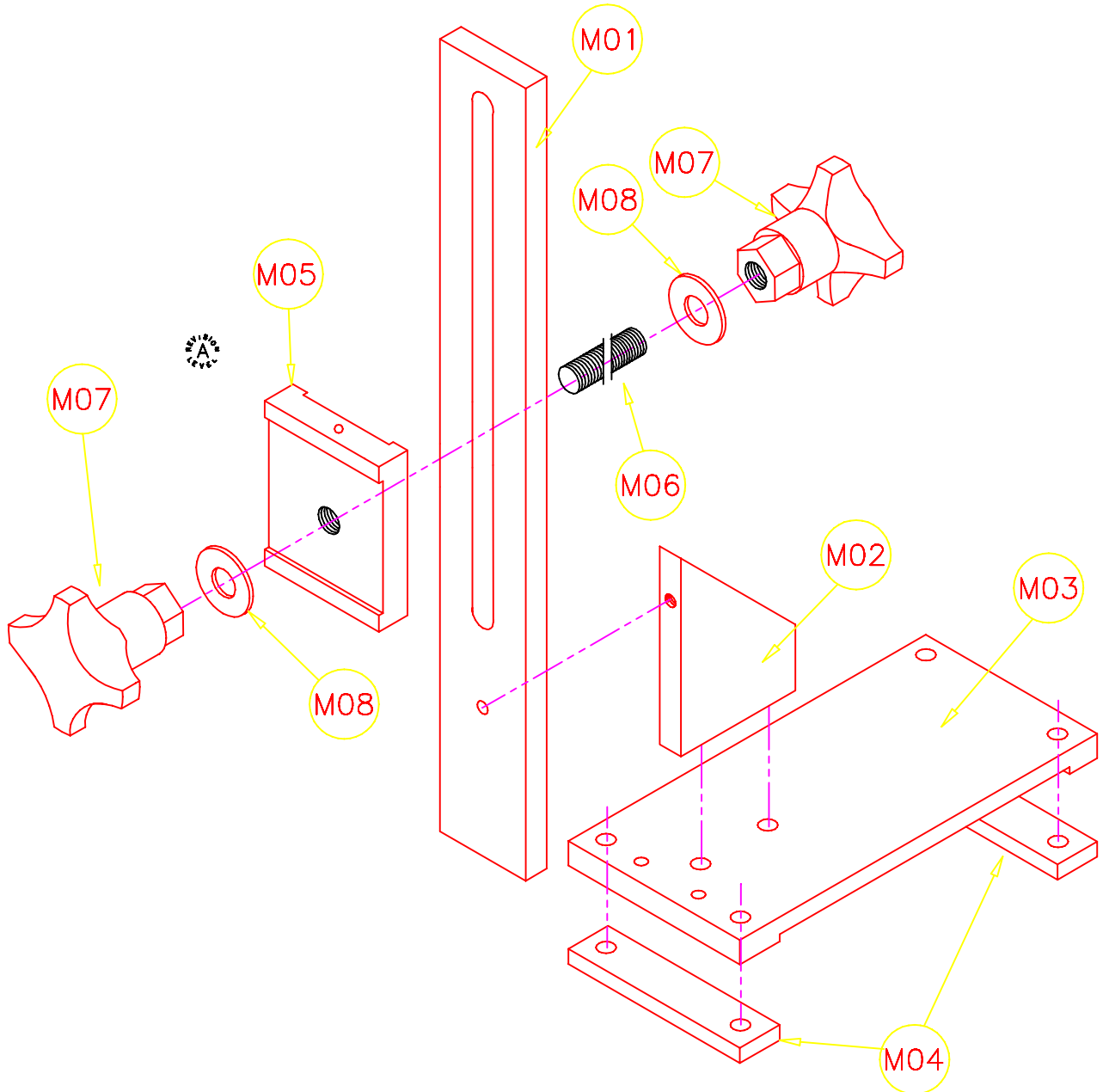


3501-B 8TH AVENUE SOUTH
ST. PETERSBURG, FLORIDA 33711
TEL. (813) 327-2123

LABELING SYSTEMS INC.

BILL OF MATERIAL

ITEM	PART#	QTY	DESCRIPTION
M01	IN-664	1	BAR, ADJUSTABLE HEIGHT
M02	SS-115	1	GUSSET, SUPPORT
M03	IN-665	1	PLATE, CODER MOUNT
M04	IN-666	2	BAR, CLAMP
M05	C-205-651	1	BRACKET, ADJUSTMENT
M06	C-205-650	1	ROD, CODER ADJUST LOCKDOWN
M07	500141	2	KNOB, 3/8" THREAD
M08	NONE	2	WASHER, FLAT 3/8" ID



DESCRIPTION					CODER MOUNT-R310 GALLON OR WIDE LABEL
PRODUCT					C-205 CODER
DATE	DRAWN BY	REV. LEV.	REV. BY	CAD FILE:	
11/18/97	JBR	A	JBR	CM3-I-00	



LABELING SYSTEMS INC.

3501-B 8TH AVENUE SOUTH
ST. PETERSBURG, FLORIDA 33711
TEL. (813) 327-2123

PART NUMBER
CM3-1-00

Bill of Material

C-205 HOT STAMP IMPRINTER

C-205

ITEM NUM:	PART NUMBER:	PART DESCRIPTION:	QTY:
B01	IN-622-1	BRACKET, WEB GUIDE	1
B02	IN-622-2	ROD, WEB GUIDE	1
B03	850008T	THUMBSCREW, 8-32 X 1/2"	1
B04	MP-2500-8	BLOCK, WEB DRAG	1
B05	IN-632-2	PLATE, PRESSURE	2
B06	700015	GUIDE, 1" SPLIT NYLON WEB	2
B08	420195	SPRING,.300X1/2 COMP SS.	2
B09A	IN-603-A	ASSY, PLATEN & RUBBER PAD	1
B09	IN-603-1	PLATEN, BACK-UP	1
B10	IN-603-2	PLATEN	1
B11	IN-603-3	PAD, RUBBER	1
B12	IN-602	BLOCK, HEATING ELEMENT	1
B13	IN-642-1B	INSULATOR, 3/16 I.D.	4
B14	810085	PLUNGER, BALL 1/4-20 X 17/32	1
B15	SC-003	COLLAR, SET .251 X .50 X .18	2
B16	850021T	THUMBSCREW, 6-32 X 3/8"	2
B17	430125	BUSHING, 313 X 250 X 250	7
B18	430130	BUSHING, 313 X 250 X 500	6
B19	IN-636-1	SHAFT, TAPE GUIDE	2
B20	IN-602-1	PLATE, HEAT BLOCK BASE	1
B21	IN-624-5	PIN, TAKE-UP ARM	1
B22	IN-647-A	KNOB, TAPE SHAFT RELEASE	1
B24	IN-617	ARM, TAKE UP	1
B25	IN-624-7	PIN, TAKE-UP ARM(MNTNG)	1
B27	SC-004	COLLAR, SET .251 X .50 X .25	1
B28	L-172-05	WASHER, UHMW 032 X 317 X 500	6
B29	IN-652-A	SPOOL, UNWIND	1
B31	IN-633-4A	PLATE, UNWIND/REWIND BACKING	2
B33	IN-624-2-A	SHAFT, UNWINDER	1
B34	IN-620	SHAFT, REWIND	1
B35	700007	SPACER, 1/2X1/4X1/4 NYLON	2
B36	IN-651	SPOOL, REWIND	1
B37	IN-653	CLIP, CORE	2
B38	400000	BEARING, 1/4" ROLLER CLUTCH	3
B39	IN-636-3	SHOULDER BOLT	1
B40	400003	BEARING, 1/4" FULL COMPLEMENT	4
B41	700008	SPACER, 1/2X1/4X5/16 NYLON	1
B43	IN-659	BELT, 1/8 X 8 1/2 ORANGE	1
B44	410001	LINK, #25 MASTER	1
B45	IN-624-3	SHAFT, DRIVE GEAR	1
B46	IN-611-1	PULLEY, DRIVE	1
B47	IN-611-4	SPROCKET, 20 TOOTH DRIVE	1
B48	856001	RING, 1/4" EXT. RETAINING	3
B50	IN-619-3	SPROCKET, 10 TOOTH CHAIN	1
B51	IN-635-2	HOUSING, GEAR DRIVE BRNG.	1
B52	IN-625	GEAR, 32 TOOTH BRASS W/BEARING	1
B53	410000	CHAIN, #25 LINK	11
B54	420175	SPRING, 3/16 X 1-1/2 EXTENSION	2
B55	IN-610-A	ARM, LINK	1
B56	855002	SHOULDER BOLT, 1/4 X 3/8" L.	1
B57	IN-611-3	SPROCKET, 10 TOOTH DRIVE	1
B58	IN-635-1	HOUSING, TAPE DRIVE BEARING	2
B59	SC-005	COLLAR, SET .313 X .62 X .25	2
B60	IN-606-1	SUPPORT, PLATEN ARM	1

Bill of Material

C-205 HOT STAMP IMPRINTER

C-205

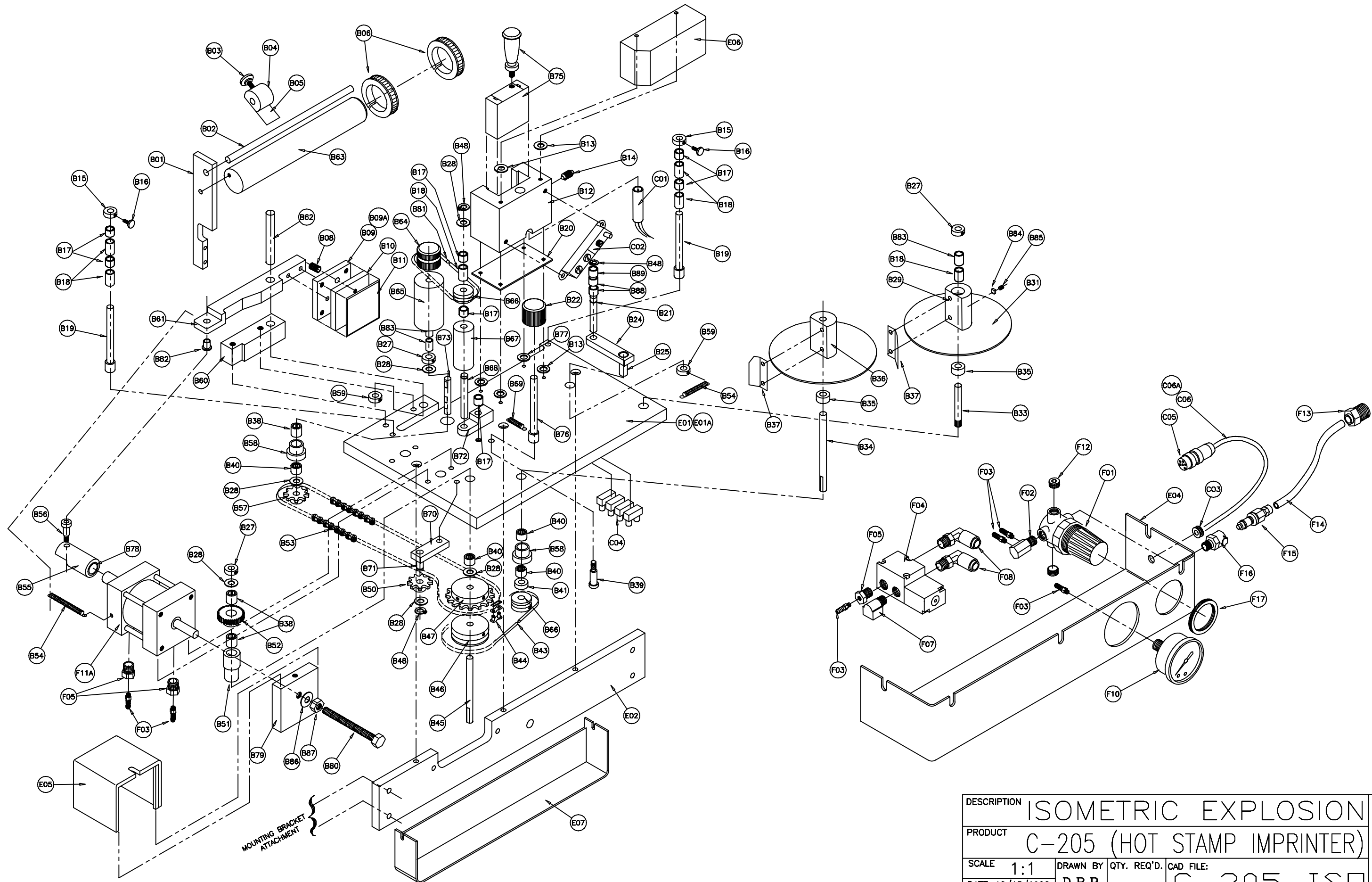
ITEM NUM:	PART NUMBER:	PART DESCRIPTION:	QTY:
B61	IN-605-A	ARM, PLATEN	1
B62	IN-624-1	SHAFT, PLATEN ARM	1
B63	IN-655	ROLLER, ANTI STRIP	1
B64	IN-647-B	KNOB, DRIVE ROLLER	1
B65	IN-609	ROLLER, DRIVE	1
B66	IN-611-2	PULLEY, REWIND	2
B67	IN-608	ROLLER, PRESSURE	1
B68	IN-607-2	SHAFT, PRESSURE ROLL	1
B69	420180	SPRING,3/16X1-1/8 EXT SS.	1
B70	IN-619-1	BLOCK, CHAIN TIGHTENER	1
B71	IN-619-2	PIN, CHAIN TIGHTENER	1
B72	IN-607-1	BLOCK, PRESSURE ROLL	1
B73	IN-624-4	SHAFT, DRIVE ROLLER	1
B75	700100	HOLDER, NORWOOD TYPE W/ HANDLE	1
B76	IN-636-2	SHAFT, TAPE RELEASE	1
B77	IN-642-2B	INSULATOR, 1/4 I.D.	2
B78	IN-610-1	ARM INSERT (DELTRIN), LINK	1
B79	IN-618	BLOCK, STOP	1
B80	851008	SCREW, 1/4-20 X 2" HHMS SS	1
B81	IN-658	BELT, 1/8 X 3 7/8 ORANGE	1
B82	430360	BUSHING,S 375 X 250 X 500	1
B83	430140	BUSHING, 313 X 250 X 750	3
B84	IN-668	FELT, 0.93" THK X 1/2" SQR	1
B85	857006	SET SCREW, 8-32 X 3/8" L SS	1
B86	853003	WASHER, 1/4" .050 THK 5/8 ODFW	1
B87	854002	NUT, 1/4-20 HEX SS	1
B88	430165	BUSHING, 375 X 250 X 750	2
B89	430150	BUSHING, 375 X 250 X 250	1
C01	210075	HEATER, 110/120V FOR C-205	1
C02	210080	THERMOSTAT FOR C-205	1
C03	200003	GROMMET, 1/16 X 5/16"	1
C04	200021	STRIP, 8 TERMINAL EURO	1
C05	200018	AMPHENOL, 5 PIN (MALE)	1
C06A	C-205-CBL	ASSEMBLY, CODER CABLE	1
C06	220230	CABLE,22AWG 5W UNSHLD C'	1
EO1	IN-600-A	BASEPLATE	1
E02	IN-626	BRACKET, MOUNTING	1
E04	IN-628-A	COVER, BOTTOM	1
E05	IN-629-A	COVER, AIR CYLINDER	3
E06	IN-630	COVER, HEAT BLOCK	1
E07	IN-641-A	COVER, BACK BASE	1
E08	700052	PLUG, 1/2 HOLE	2
F01	100300	REGULATOR, AIR	1
F02	IN-656	AIR FITTING	1
F03	100224	FTNG, 10-32M TO 1/4 BARB	6
F04	100098	VALVE, 12VDC 4WAY MAC AIR	1
F04 (*)	100091	VALVE, 24VDC 4-WAY MAC AIR	1
F05	100215	FTNG, 1/8M TO 10-32F REDUCER	3
F07	100209	FTNG, 1/8 90 STREET ELL	1
F08	100217	FTNG, 1/4M ELBOW TO 1/8 NPT	2
F10	100319	GAUGE, PANEL MOUNT PRESSURE	1
F11A	CYL-ASSM	C-205 CYLINDER ASSEMBLY	1
F12	100299	FTNG, 1/8" NPT BLACK PLUG	2
F13	100220	FTNG, 1/4M TO 1/4F	1

Bill of Material

C-205 HOT STAMP IMPRINTER

C-205

ITEM NUM:	PART NUMBER:	PART DESCRIPTION:	QTY:
F14	100405	AIRLINE, 1/4" WHITE	10
F15	100201	FTNG, 1/4 DOUBLE END INSERT	1
F16	100199	FTNG, 1/4 QUICK DISCONNECT	1
F17	100321	NUT, PANEL MOUNT AIR REGULATOR	1

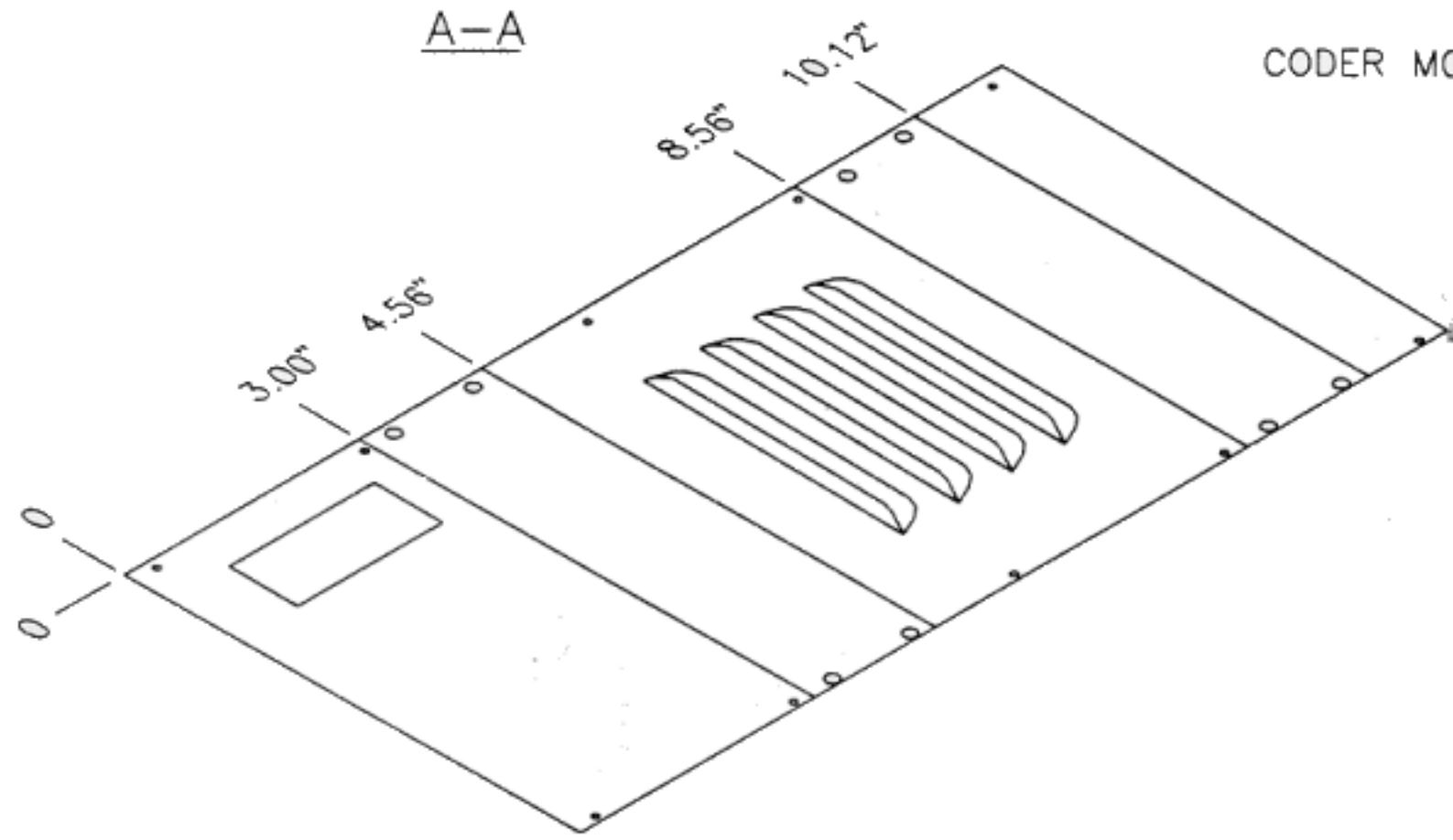


DESCRIPTION	ISOMETRIC EXPLOSION		
PRODUCT	C-205 (HOT STAMP IMPRINTER)		
SCALE	1:1	DRAWN BY	QTY. REQ'D.
DATE	12/15/1992	D.B.P.	-
		CAD FILE:	C-205-ISO

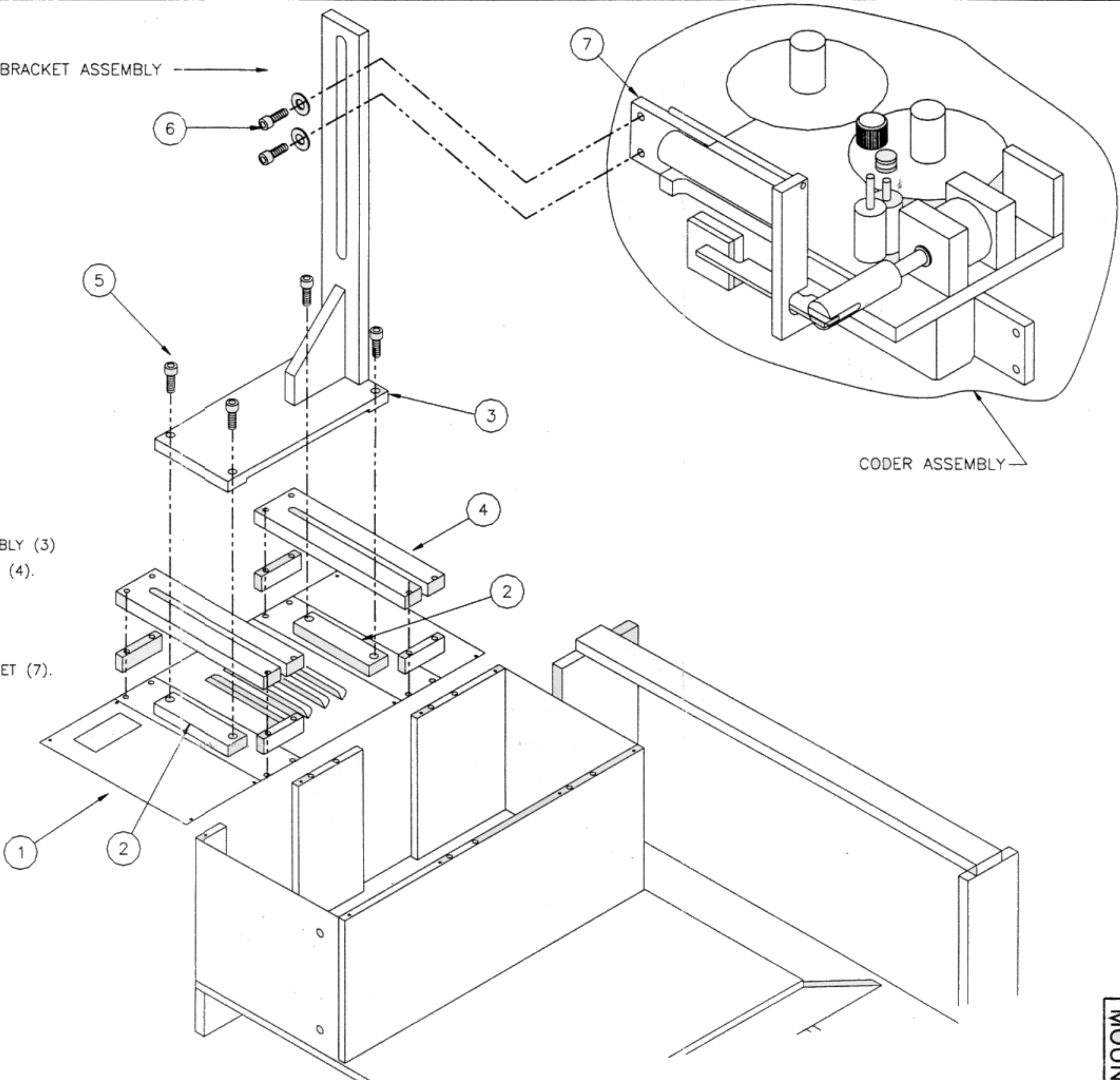
PART NUMBER
C-205-ISO

Universal
LABELING SYSTEMS INC.
3501 8TH AVENUE SOUTH
ST. PETERSBURG, FLORIDA 33711
TEL. (727) 327-2123

A-A



CODER MOUNTING BRACKET ASSEMBLY



CODER ASSEMBLY

1. REMOVE THE COVER (POINTER #1) FROM LABEL APPLIER.
2. UNFASTEN BOTH CODER MOUNTING CLAMPS (2) FROM CODER MOUNTING BRACKET ASSEMBLY (3).
3. PLACE CODER MOUNTING BRACKET ASSEMBLY (3) ONTO THE ACCESSORY MOUNTING BARS (4).
4. PLACE CODER MOUNTING CLAMPS (2) UNDERNEATH ACCESSORY MOUNTING BARS (4).
5. FASTEN CODER MOUNTING BRACKET ASSEMBLY TO ACCESSORY MOUNTING BARS USING 1/4-20 (5) SCREWS THROUGH SLOTS TO TAPPED HOLES IN CLAMPS.
6. UNSCREW BOTH 1/4-20 SOCKET HEAD CAP SCREWS (6) FROM CODER MOUNTING BRACKET (7).
7. ATTACH CODER ASSEMBLY TO HORIZONTAL ADJUSTMENT BRACKET
8. WEB LABELS THRU R310 AS SHOWN ON SIDE OF R310.
9. LOOSEN ALL FOUR 1/4-20 SOCKET HEAD CAP SCREWS (5) FROM CODER MOUNT.
10. ALIGN CODER WITH LABEL STOCK
11. CUT COVER AS SHOWN IN VIEW A-A
12. FASTEN NEWLY CUT COVERS (9) TO TOP OF APPLIER, SLIDING THE LARGER ONE UNDER THE CODER MOUNTING BRACKET (3).

PUNCH HOLES ALONG THIS SIDE

DESCRIPTION	CODER MOUNTING INSTRUCTIONS		SCALE	N.T.S.	CAD PART NO	\C205\MONTR310	DRAWN BY	Doug P.
	PRODUCT	R310 LABEL APPLIERS	DATE	7/14/94				
			UNIVERSAL LABELING		3501-B 8TH AVENUE SOUTH ST. PETERSBURG, FLORIDA 33711 TEL. (727) 327-2123			

PART NUMBER
MOUNT-R310

C-205 Coder Mounting Addendum



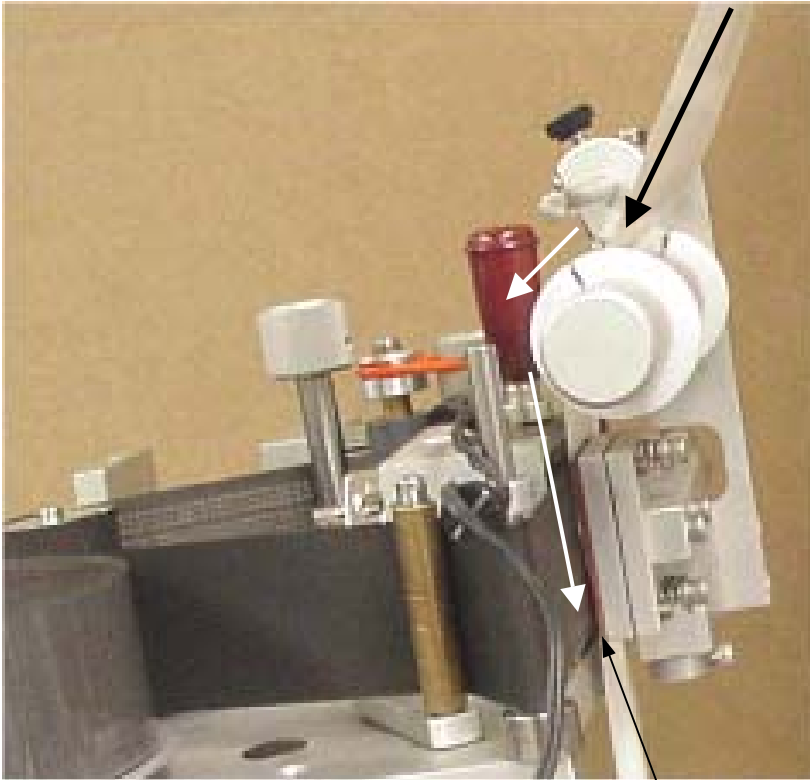
To allow enough room for the coder, the Unwind is mounted higher.

1. Remove the roll of Labels and all Webbing from your machine.
2. Removing the Discs from the Unwind will make it easier to handle.
3. Remove the Unwind from the back of your machine with a 3/16" Allen Wrench.
4. Mount the Unwind extension bar to the Machine where the Unwind was, Slanted side toward machine.



5. Mount the Unwind to the back of the Unwind Extension bar, slanted side toward extension bar.

Webbing the Labels on Machine with the Coder in place.



Note: The Web and labels passes in front of the Orange pad. This pad presses the label toward the black ribbon and against the Imprint characters. The heat from the characters and pressure makes an imprint in the label.

Webbing the Ribbon on the Coder

