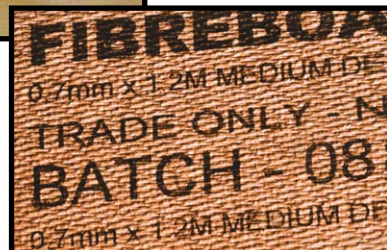


We Build Confidence... *In High Definition Large Character Printing*

- **Sustainable high marking quality and resolution**
- **Minimum cost of ownership**
- **Maximum uptime**
- **Maximum flexibility**



A Cleaner Approach to Ink Jet Printing

A Cleaner Approach to Ink Jet Printing

The Marsh 1100/3100 printers

The Marsh 1100/3100 printers combine high resolution printing with a simple user interface, making message selection quick, easy and error-free. The Marsh 1100/3100 are designed and manufactured to deliver optimum performance, reliably printing accurate, high quality, real-time alphanumeric codes, bar codes and graphics, on-line.

Sustainable high marking quality and resolution

The 180 dpi marking resolution of the Marsh 1100/3100 printers allows for complete generic carton coding at pre-printed quality levels. With their unique, self-maintaining printhead system, the Marsh 1100/3100 printers guarantee the highest quality bar codes and printed images on every case, even in the dustiest environments.

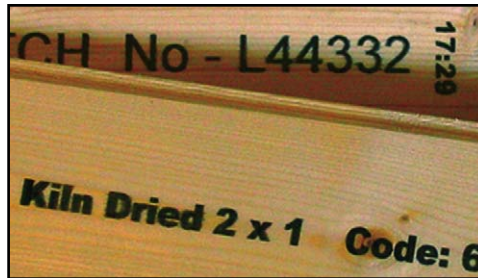
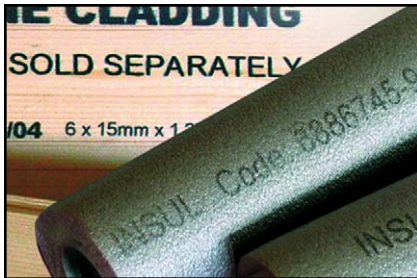


These systems can accomplish this because they are the only high definition ink jet printers that automatically clean and maintain the printhead before every box is printed — without affecting production speed or throughput. Unique technology — building confidence in print quality.

Minimum cost of ownership

The self-cleaning, self-maintaining printheads in the Marsh 1100/3100 keep running without needing human intervention and associated downtime costs. And there is no wasted ink, thanks to an ink recycling system that ensures all ink used during printhead maintenance is filtered and re-used. You only pay for the ink you use for printing. The air driven ink system in the Marsh 1100/3100 printers eliminates unreliable pumps, solenoids and unnecessary moving parts, requiring only simple filters for basic maintenance.

The carton tracking interlock system eliminates the risk of dual marking or uncoded product, and prevents the wasted ink and mess caused by accidental triggering of product photocells. The advanced date checking algorithms found in these printers are proven to reduce costly operator date coding errors.



Maximum uptime

The advanced printhead design in the Marsh 1100/3100 printers means no warm-up time is required when starting up the machine, and there is no need to stop the line to clean the printheads. The intuitive and simple user interface features a touch screen display, which helps to eliminate operator error and increase throughput.

Maximum flexibility

The master/slave capability in the Marsh 1100/3100 operates and controls up to four printheads (1100, 3100 or combination) from a single display for convenient, error-free operation of a generic carton coding system. The built-in networking (RS-232, TCP/IP) capability allows you to interface this system to the factory IT, line PLC or any other computers. Powerful off-board image design provides complete flexibility in message editing and programming, including the full list of TrueType® fonts.

Specifications

Technical Specifications

Printhead

1100: 17mm (0.7") high 180 dpi
(126 addressable jets per printhead)

3100: 70mm (2.7") high 180 dpi
(500 addressable jets per printhead)

Print Area (per printhead)

1100: 17mm (H) x 2000mm (L)
(0.7" x 78")

3100: 70mm (H) x 2000mm (L)
(2.7" x 78")

Number of Printheads

Up to (4) heads in master/slave mode

Self-Cleaning, Self-Prime System

Standard (patented)

Ink Reclaim System

Standard (automatic)

Print Distance

0.5mm to 4.0 mm max. (0.15")

Print Speed (resolution, substrate, application and set-up dependent)

0.3 - 31 metres/min (1' - 100'/min)

Ink

Non-toxic, suitable for food packaging

Ink Supply / Delivery

Non pressurised, screw-in canister

Dimensions

Printhead

1100: 195mm (w) x 135mm (h) x 305mm (d)

3100: 195mm (w) x 155mm (h) x 360mm (d)

Controller / User Interface

Integral to printer

Ink Cabinet

Integral to printer

Inputs / Outputs

Integral Print Sensor

Standard

External Inputs

Print Go Input (24V PNP or Volt Free)

Encoder Input (24V Single / Quadrature)

Line Select (up to 16 lines)

External Outputs

Fault Output (Volt Free)

Warning Output (24V PNP)

Spare (24V PNP)

Operator Interface (CLARiTY)

5.7" Full Colour LCD

Services

Air Supply Requirements

6 Bar, 90psi, Dry, Uncontaminated

Power Supply Requirements

90-264VAC, 47-63 Hz, 140VA (max)

Operating Temperature

10° - 40° Deg C (50° - 104° Deg F)

Approvals

CE/UL60950:2000 (3rd edition)

Further information available upon request

System

Operator Interface

Full-colour LCD Touch-Panel CLARiTY Interface

Job Selection and database support as standard. WYSIWYG Print Preview

Operator Interface Languages

Language selection including English, Danish, Dutch, French, Italian, German, and Spanish. Others available upon request.

Password Protection

3 User-Levels

Remote Coder Configuration Software

CLARiTY Configuration Manager

'Off-Line' Set Up and Parameter Storage available as standard

Diagnostics

On - Board Diagnostics as standard

On-Board Memory

64MB Memory, Compact Flash and/or Expansion Card (depending on model)

Print Capability

Image Design Software

Claricom CLARiSOFT Package Coding Design Software

Font Support

Full downloadable font support for TrueType® (including multiple languages and Unicode support)

Text

Scaleable text including rotation, mirror and inverse printing

Supported Field Types

Fixed, Variable (User Entered), Merged, Database, Counters, Date, Offsets, Time, Paragraph (Text Blocks)

Basic shape drawing (circles, rectangles etc.)

Special Functions

Auto real time and date functions

Auto best before date calculation and concession management

Auto incrementing & decrementing text, counters and bar codes

Bar Code Printing

EAN 8, EAN 13, UPC-A, UPC-E, Code 39, EAN 128, Code 128, ITF. Others available upon request.

Graphics, Images and Logos

Multiple graphic formats supported using CLARiSOFT. Any size up to maximum print area

Print Functions

Mirror image printing, image rotation and inverse printing

Day Code Support

Hour, Day of Week, Day of Month, Week of Year, Month of Year, Year of Decade and Arabic

Date Support

Code Options

Start of Day, Shift Codes, Factory, Machine, Line ID

Field Orientation

0°, 90°, 180°, 270°

Networking and External Communications

External Data Communications

RS232/422 Point-to-Point Communications

Ethernet 10/100 Base TX Network

Communications

Binary and ASCII Comms Protocols and

Windows Drivers

Host PC Mode (Remote Database) using

CLARiNET

Master/Slave Functionality

Group Job Selection Function and Group

Printer Control Function

Network Control Software

Claricom CLARiNET Coder Independent

Network Management Software

© 2005 Videojet Technologies Inc. – All rights reserved. Videojet Technologies Inc.'s policy is one of continued product improvement. We reserve the right to alter design and/or specifications without notice. Videojet and MARSH are registered trademarks of Videojet Technologies Inc. TrueType is a registered trademark of Apple Computer, Inc. CLARiTY, CLARiSOFT and CLARiNET are trademarks of Claricom Limited.



800-843-3610 • www.videojet.com • info@videojet.com

Videojet Technologies Inc. • 1500 Mittel Boulevard

Wood Dale IL • 60191-1073 • USA

Phone: 630-860-7300 • Fax: 630-616-3623

1100/3100-0405-US
Printed in U.S.A.